

LZRU RUŽOMBEROK

ARP 490508N 0192207E

1 615 ft (492 m)

FIC 124,300



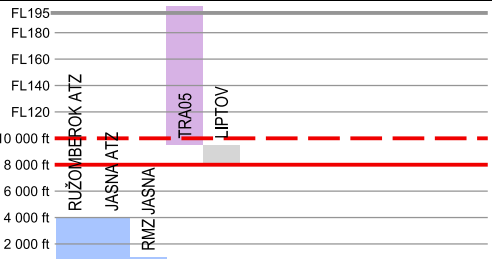
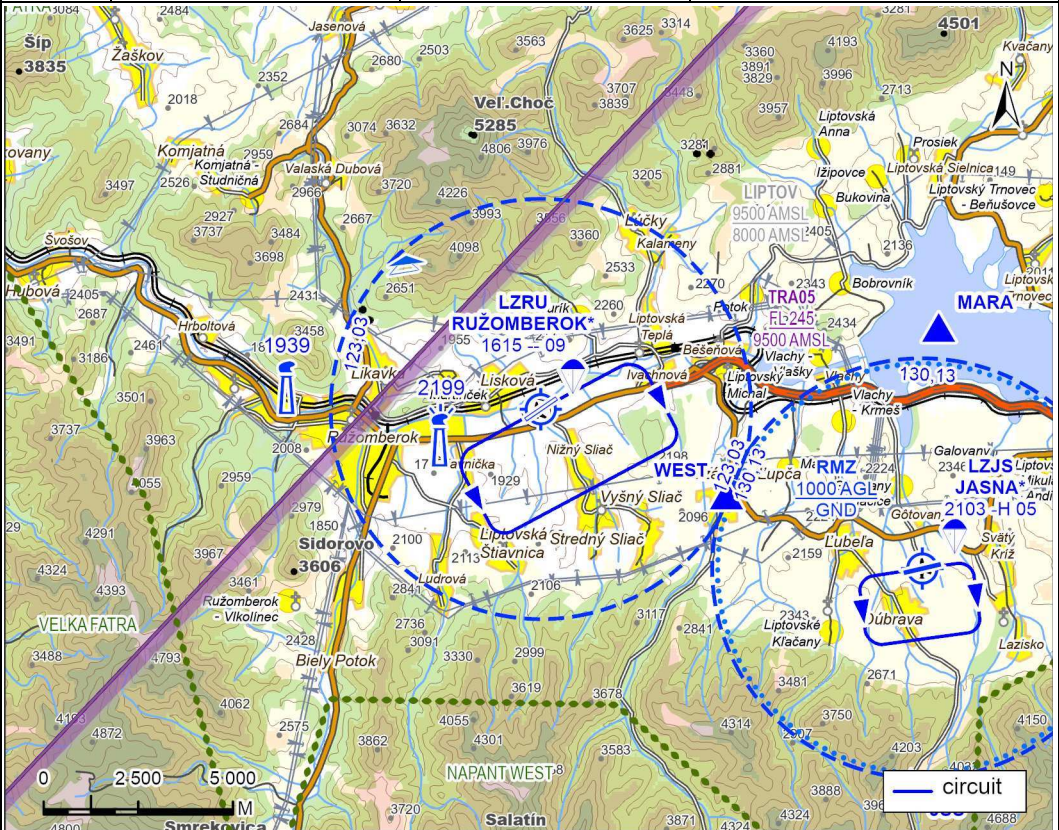
RUŽOMBEROK TRAFFIC
123,030

RWY	06L/24R	06R/24L
	940 m	940 m

VFR day	Circling: 2 762 ft (842 m) AMSL
	Public Domestic

AD available only with permission of the AD operator.

+421/911/69 40 04
+421/917/96 98 78
Aeroklub Ružomberok
P. O. Box 80
034 01 Ružomberok
vrbensky.miroslav@gmail.com
www.aeroklubružomberok.sk



Last change: AD ELEV, web address, RWY strenght, TODA, CWY to Aerodrome chart added

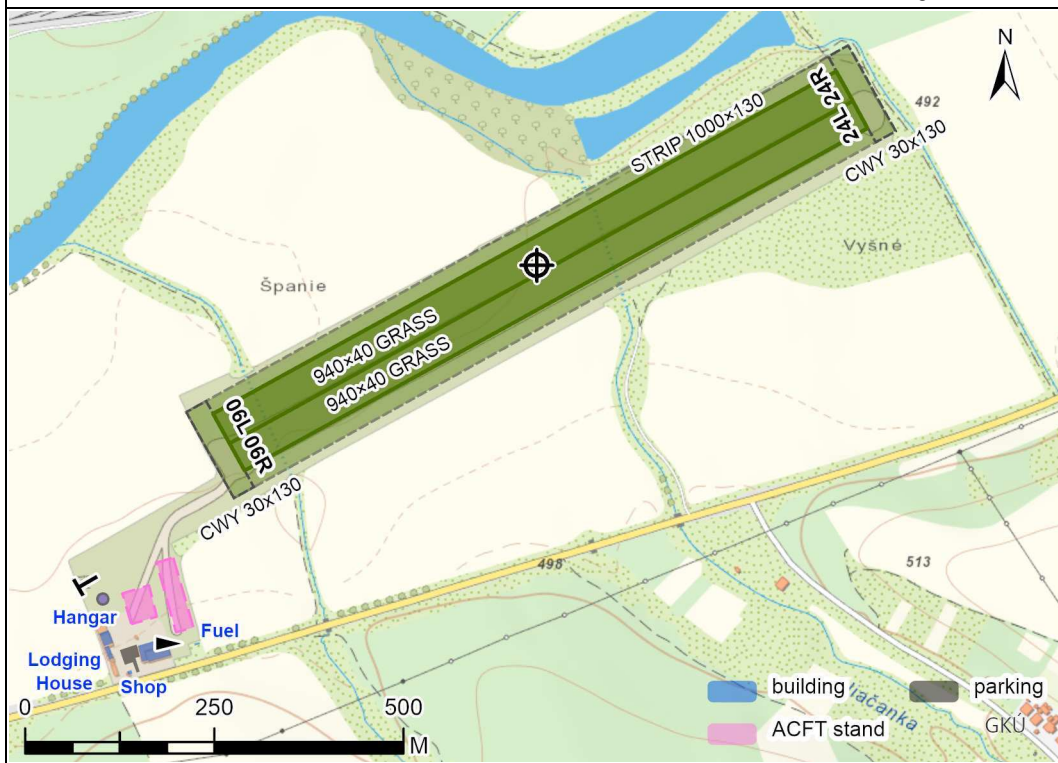

LZRU RUŽOMBEROK

ARP 490508N 0192207E


1 615 ft (492 m)


RUŽOMBEROK TRAFFIC
 123,030

RWY	MAG direction	TORA (m)	TODA (m)	ASDA (m)	LDA (m)	Strength
06L	056°	940	970	940	940	5 700 kg/0,4 MPa
24R	236°	940	970	940	940	5 700 kg/0,4 MPa
06R	056°	940	970	940	940	5 700 kg/0,4 MPa
24L	236°	940	970	940	940	5 700 kg/0,4 MPa



 All the year, snow clearance is not provided.


 Limited, O/R


 Hotels in the town Ružomberok.

 NIL

 Limited

 Emergency call: 112
Hospital in the town Ružomberok.

 Hotels in the town Ružomberok.

 Taxi, train, bus

1. Local traffic regulations

The aerodrome can be used only with approval issued by aerodrome operator. The approval to use the aerodrome and information about conditions at the aerodrome is possible to obtain from Head of Aeroclub Ružomberok or his Deputy or Head of Flight Operations.

Aerodrome traffic circuits:

RWY 06 to the right,

RWY 24 to the left.

2. Charges

NIL

3. Additional Information

NIL